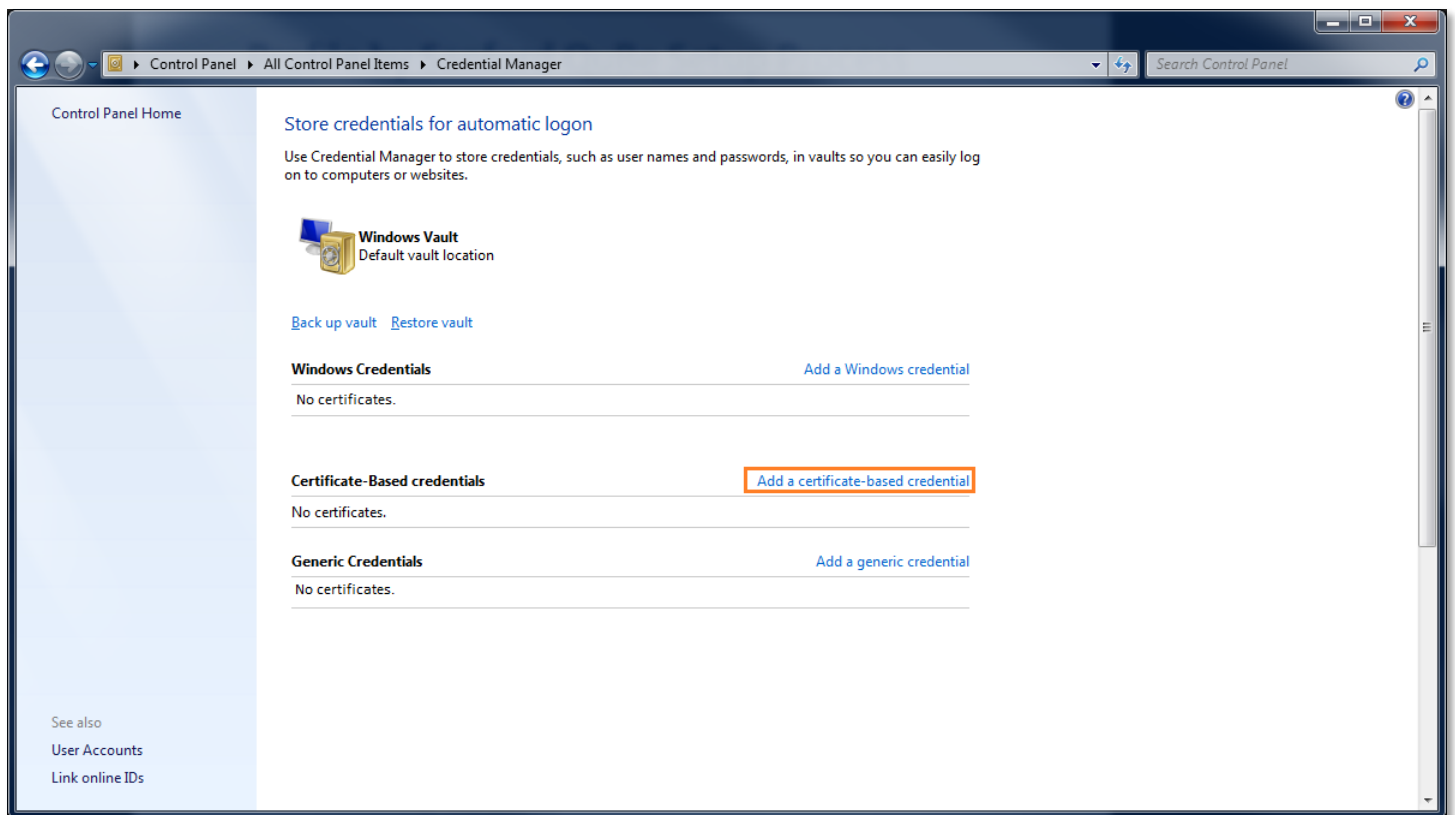
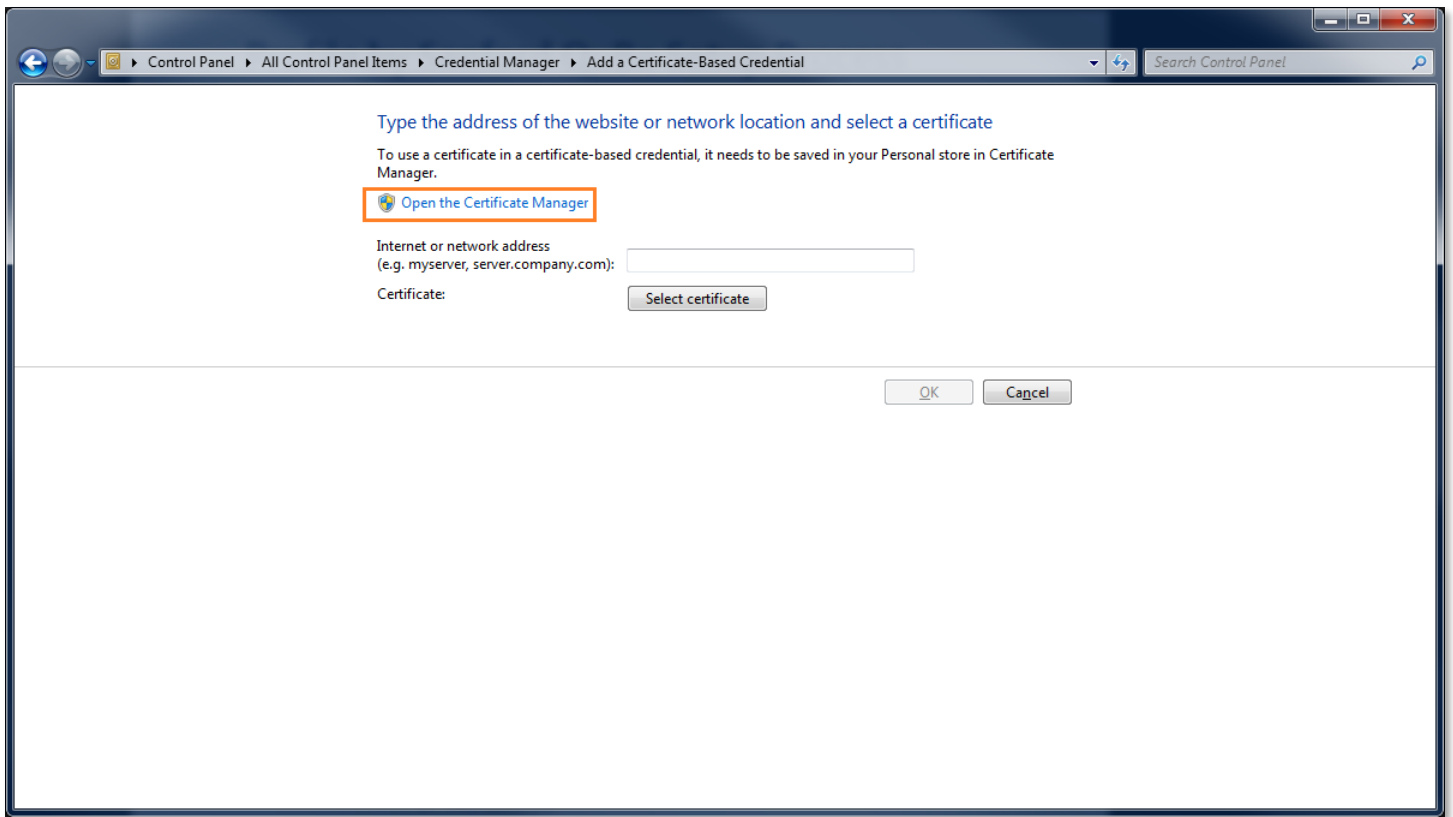


Manage Certificate for Softphone on Windows

1. To use TLS with any softphone, the certificate will need to be installed on the device. For this the device is a PC running Windows 7. This should be similar for other versions of Windows.
2. In the start menu search 'Credential Manager', and when found click it.

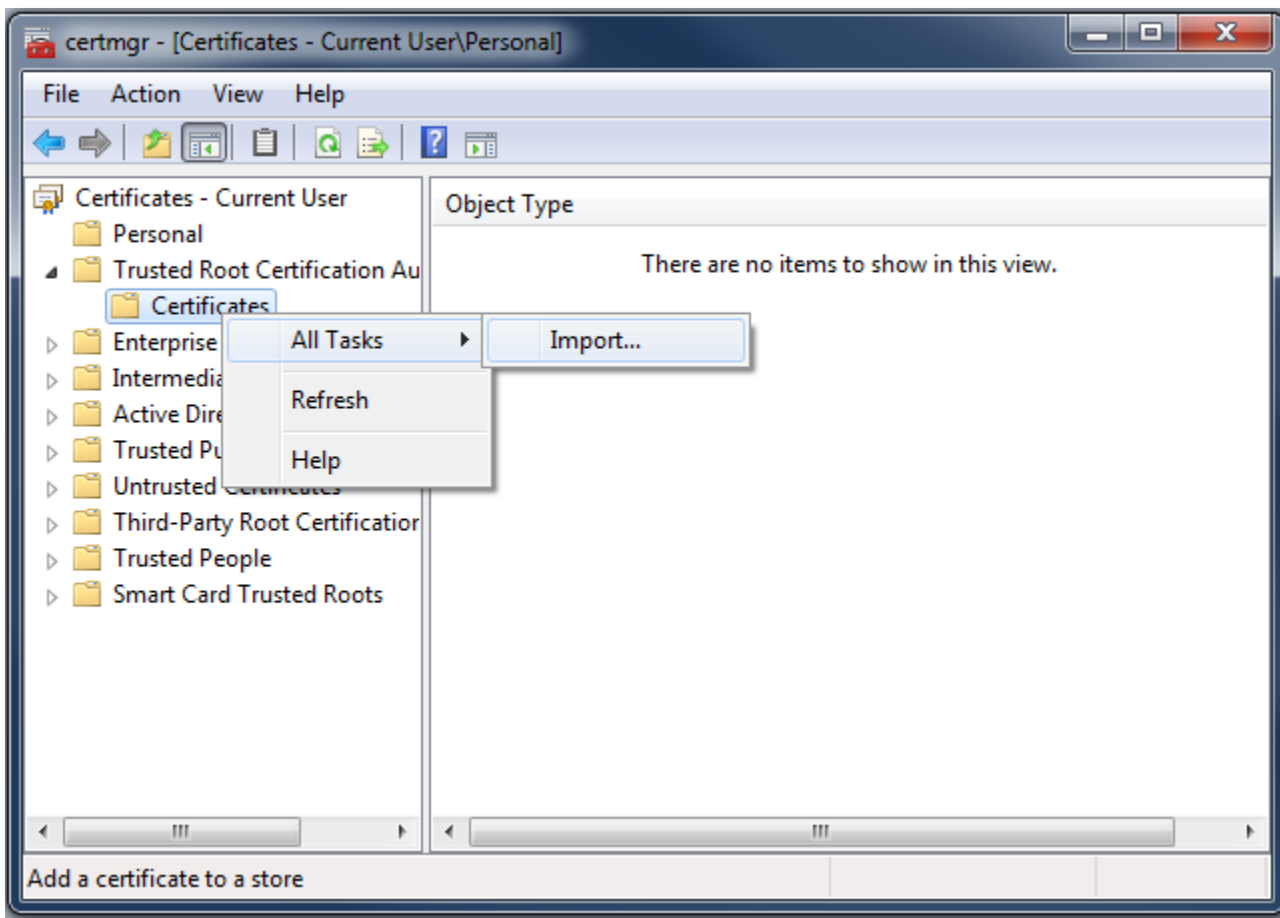


3. From here click 'Add a certificate-based credential' under Certificate-Based credentials



4. Click 'Open the Certificate Manager'
 - a. this may require admin privileges.

5. From certmgr, go to Trusted Root Certification Authorities
 - a. Right Click Certificates
 - i. All Tasks
 1. Import



6. Follow the steps provided by the Certificate Import Wizard
 - a. Click Next
 - b. Select the file for the certificate downloaded from the QuBePBX
 - i. Do not worry about the file type the .ca file will work fine
 - c. Click Next
 - d. The certificate store should already be selected
 - i. If not select 'Place all certificates in the following store'
 - ii. Select 'Trusted Root Certification Authorities'
 - e. Click Next
 - f. Click Finish
7. There should be a new certificate labeled Asterisk Private CA
8. The certificate is now available for use by the soft phone